



EASTSHIP-MS
WIND LOGISTICS



Our expertise

About us

Eastship MS Wind Logistics is a 100% Romanian company formed through the merger of two of the largest firms in the region:



Established in November 2022, we have joined forces and invested an additional €14.5 million in specialized equipment, creating the largest fleet dedicated to oversize transports in the region.

With an extensive track record and a versatile fleet, our team is equipped to transport nearly any type of cargo

- ☞ Heavy and oversize transport
- ☞ Wind turbine logistics
- ☞ River freight
- ☞ Engineering
- ☞ On site logistics



Strong points



Project management

Our team members are experts in their respective fields, including project management, engineering, logistics, and customs procedures. They are skilled at managing complex projects, from the initial planning stages to the final delivery of the wind energy components. They have an in-depth understanding of the requirements for each project, and are able to anticipate and mitigate potential risks before they arise.



Port operations

We provide our clients with a comprehensive range of port services, ranging from simple forwarding to complex engineering, including lifting and lashing plans, lashing services, cargo packing, and more. Whether it's project cargo or bulk cargoes we strive to perfectly match the needs of our clients with technically feasible and competitively priced services that fit into the larger picture of their operations.



River freight

With our in-depth understanding of the inland waterways network, including draft, width, and aircraft restrictions, as well as the various types of barges, we are confident in our ability to offer effective solutions for transporting wind energy components for future projects throughout Europe.



Route surveys

While planning a route, we pay special attention to minimizing obstacles in traffic and providing complete safety of transit, concerning such aspects as cost optimization and protection of the natural environment. In the scope of preparing the route of abnormal transport, we offer: safe transport routes with specified critical points, alternative detours, bridge structures expertises, technical help in every country, adjustment to road infrastructure (assembly and disassembly), photographic documentation of the route, projects of transport of wind turbine towers.



Shortsea shipping

For the sourcing plants in Europe or close to Europe, we can provide alternative solutions to the consecrated ones, including full engineering for issuing lifting, stowage, lashing plans, considering both ends smooth cooperation.



Heavy haulage

Our brand new equipment is specifically tailored to transport wind turbine components safely and efficiently, ensuring that we can handle even the largest and heaviest loads with ease. Additionally our team members have participated in some of the most challenging special cargo projects in our region.

59
Trucks



MAN
Trucks 8x4

MAN
Trucks 6x4

VOLVO
Trucks 8x4

VOLVO
Trucks 6x4

Modular trailers

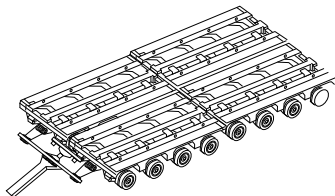
122
Modular axles

A comprehensive portfolio of accessories allows us to transport almost any cargo.

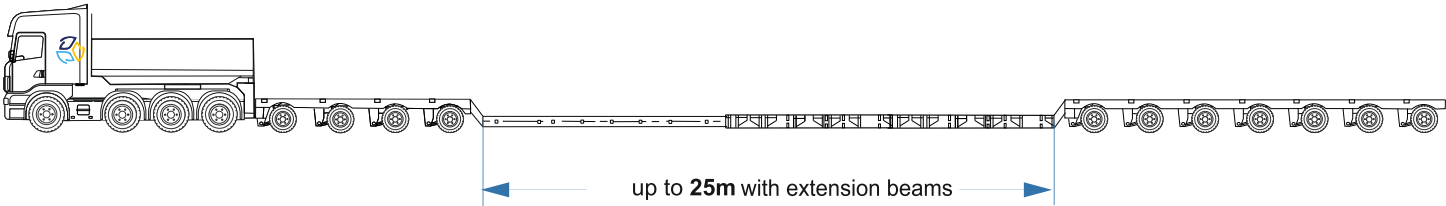
Modular trailers with turntables



Modular trailers parallel combination



Modular trailers with vessel deck



A4S3+ Double extendable Platform length: up to 25m | Platform Width: 2.7m, 3.0m | Ground clearance:0.50m

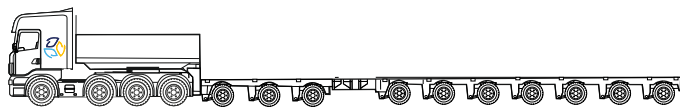
Experienced Drivers

Our drivers undergo regular training to enhance their expertise in handling abnormal cargoes, combining formal education with practical experience.

- experience transporting wind turbines components
- formal Goldhofer training for handling wind turbines components.



ARCUS STZ PK



A4S3+7
Extendable

Platform Length: 16.6-21.7m
Platform width: 2.4-3.0m
Ground clearance: 0.93m

A4S3+6
Extendable

Platform Length: 15.0-21.1m
Platform width: 2.4-3.0m
Ground clearance: 0.93m



Lowbed



A4S4
Extendable

Platform Length: 6-14.1m
Platform width: 2.7-3.0m
Ground clearance: 0.35m

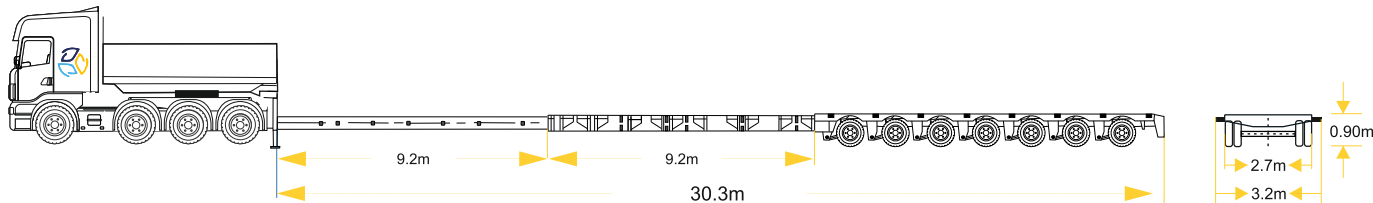
A3S3
Extendable

Platform Length: 7.9-13.3m
Platform width: 2.5-3.0m
Ground clearance: 0.32m

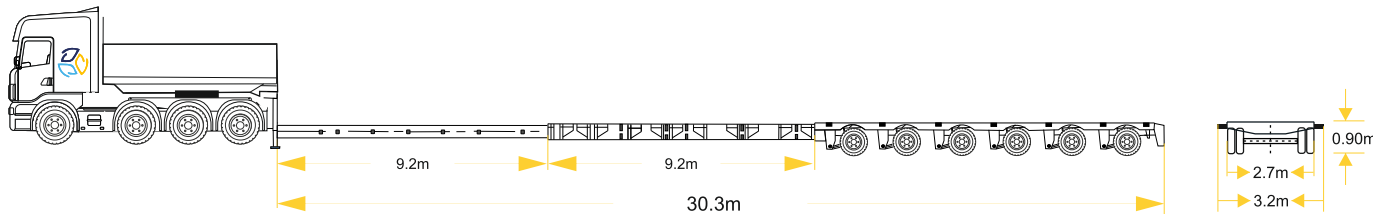
A3S2
Extendable

Platform Length: 6.8-12.3m
Platform width: 2.5-3.0m
Ground clearance: 0.32m

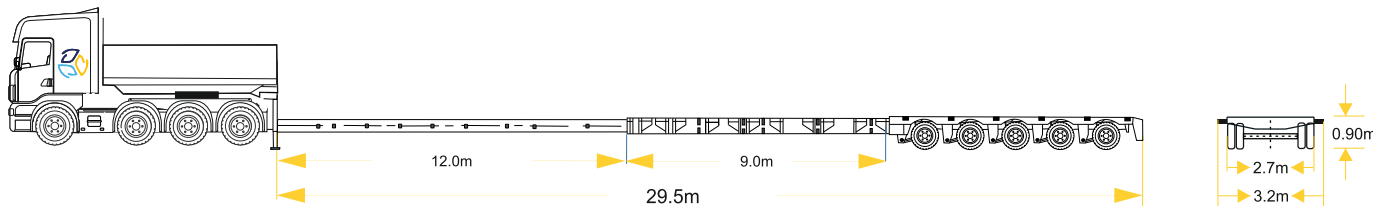
Extendable semitrailers



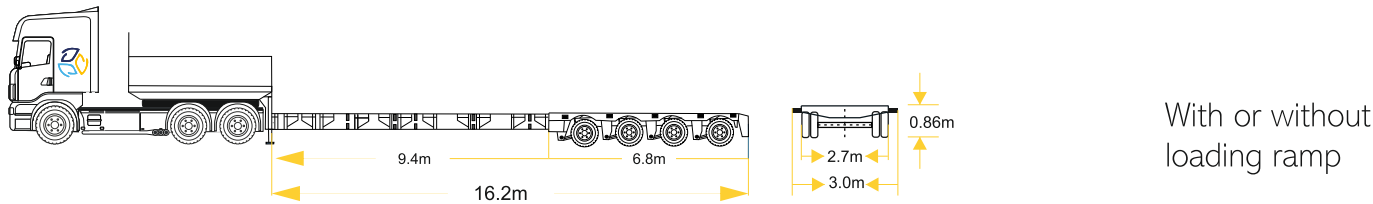
A4S7 Double extendable Platform Length: 11.9m, 21.1m, 30.3m Platform width: 2.7m Ground clearance: 0.90m



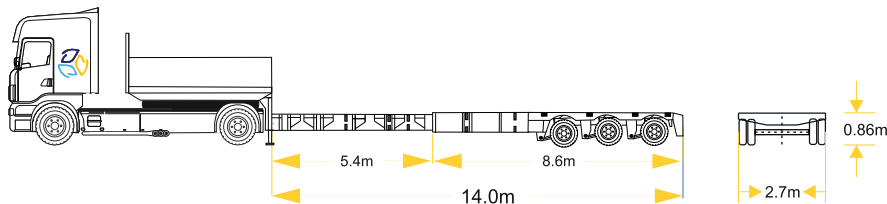
A4S6 Double extendable Platform Length: 10.9m, 21.1m, 30.3m Platform width: 2.7m Ground clearance: 0.90m



A4S5 Double extendable Platform Length: 8.5m, 17.5m, 29.5m Platform width: 2.7m Ground clearance: 0.90m



A3S4 Double extendable Platform Length: 6.8m, 16.2m Platform width: 2.7m ,3.0m Ground clearance: 0.86m



A2S3 Extendable Platform Length: 8.6m, 14m Platform width: 2.7m Ground clearance: 0.86m

All of our semi-trailers are equipped with **hydraulic suspension** systems to enhance stability during transportation

Specialised trailers for wind turbine transport

Our specialized equipment for wind turbine components transport is designed to provide exceptional flexibility and efficiency during transport. With features such as the Free Turning Device (FTD) and a low overall weight, our trucks can navigate turns more effectively, even in tight or complex areas. This combination simplifies the movement of components, reduces strain on infrastructure, and enables us to handle challenging routes with ease.



Specialised trailers for tower segments transport

RA2-110
tower adapters

Inner flange: 2.30 - 6.78m
Outer flange: 2.15- 6.33m



- Hydraulic adjustable ground clearance
- Low overall weight
- Free turning device for high agility
- Radio remote control for easy operation of all hydraulic functions
- Compatibility with THP modular trailers ensure multiple possible combinations



Maximum payload
2x60 tons



High Agility



Multiple
combinations
possible



Specialised trailers for blades transport

BladeS blades adapters



Lightweight



High Agility



Multiple combinations possible



- High ground clearance under the rotor blade
- Low overall weight
- Turntable compatible with all common tip racks
- Radio remote control for easy operation of all hydraulic functions



Ventum AAAA blades adapters

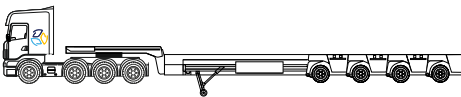
5X Extendable-72 m



- High axle compensation (600 mm) and adjustable steering, providing enhanced maneuverability in restricted spaces and complex site conditions.
- Pendular axle technology with a stroke of ± 300 mm for superior adaptability to uneven terrain.

No co-driver required when driving empty

The extremely strong chassis beams ensure there is no extra bending force or torsional stress on the load



Super Wing carrier

4X Extendable-54 m



- Optimised load distribution across all axles for improved road safety and compliance with transport regulations.
- Pendular axle technology ± 600 mm stroke for superior adaptability to uneven terrain.



An aerial photograph of a wind farm construction site. Several large, white, cylindrical nacelle casings are lying horizontally on the ground, supported by green metal stands. Two large yellow cranes are positioned near the casings. A red semi-truck is pulling a long trailer with a nacelle casing on it, moving along a dirt road. The surrounding area is a mix of brown and green fields.

Portfolio

Our team has the
experience and
the **expertise**
to handle every aspect of
any wind energy project

Urleasca

2025



19 **Goldwind** wind turbines
from Constanta to Braila

- Project management
- Route survey
- Engineering

- Road transport
- Escort vehicles
- Civil works

- Temporary storage
- Port operations
- Customs

Medgidia

2024



wind turbines
from Constanta to Medgidia

- Project management
- Route survey
- Engineering
- Road transport
- Escort vehicles
- Civil works
- Temporary storage
- Port operations
- Customs

Kostolac

2024



20 **SIEMENS Gamesa**
RENEWABLE ENERGY

wind turbines
from Constanta to Kostolac

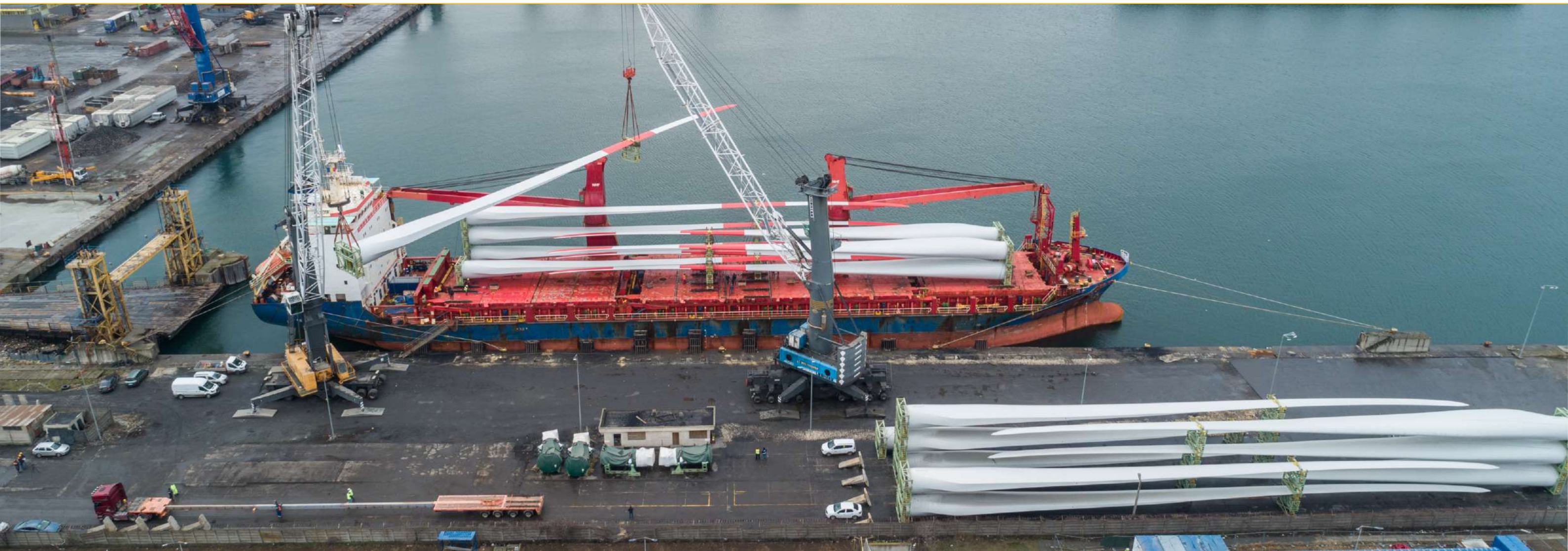
- 🚚 Barge transport
- 🚚 Project management

- 🚚 Port operations
- 🚚 Temporary storage

- 🚚 Engineering
- 🚚 Customs

Krivaca

2024



wind turbines
from Constanta to Krivaca

🔹 Barge transport
🔹 Project management

🔹 Port operations
🔹 Temporary storage

🔹 Engineering
🔹 Customs

Pupin

2024



16 **NORDEX**

wind turbines
from Constanta to Pupin

▢ Barge transport
▢ Project management

▢ Port operations
▢ Temporary storage

▢ Engineering
▢ Customs

More than just Wind Energy Projects

9 HVTs transported to Ukraine



5 from Suceava to Chernivti

2 from Suceava to Dinrpo

2 from Suceava to Ivano Frankivsk

Reactors Transport



Complementary services

Our versatile fleet and experienced team enable us to manage the complexities of almost any specialized transport, regardless of size or weight. From oversized wind turbine components to heavy industrial machinery, we adapt to the unique demands of each project with precision and efficiency. With in-depth route planning, regulatory expertise, and specialized equipment, we ensure seamless execution, overcoming logistical challenges to deliver safe and timely transport solutions across Europe.

Our expertise includes the placement of high voltage transformers (HVT) utilizing the precise jacking and skidding method, ensuring safe and efficient positioning without the need for cranes.

- Feasibility studies
- Commercial-technical risk assessments
- Pre-bidding budgeting
- Route surveys
- Shipping efficiency proposals
- Vessel chartering

- Port handling
- Lifting and lashing plans
- Crane hire for site discharge
- Yard storage planning
- Civil works, pre and on carriage

Decades of Experience

Across Landmark Wind Energy Projects

Wind farm name: Fantanele-Cogealac
Country: Romania
240 turbines: GE Energy

2009

Wind farm name: Targusor-Zephir
Country: Romania
52 turbines: Siemens

2011

Wind farm name: La Piccolina
Country: Serbia
2 turbines: Vestas

2016

Wind farm name: Primorskaya
Country: Ukraine
26 turbines: GE Energy

2018

Wind farm name: Galbiori Silistea
Country: Romania
7 turbines: GE Energy

2011

Wind farm name: Babadag
Country: Romania
16 turbines: Suzlon

2013

Wind farm name: Kula
Country: Serbia
3 turbines: Vestas

2015

Wind farm name: Dniestr
Country: Ukraine
10 turbines: GE Energy

2020



Upcoming projects

2025

Deleni Wind Farm
Country: Romania
Manufacturer: GE Energy

2025

Tiligul Wind Farm
Country: Ukraine
Manufacturer: Vestas

Focus on safety and sustainability





EASTSHIP-MS
WIND LOGISTICS





EASTSHIP-MS
WIND LOGISTICS

info@eastship-ms.com

www.eastship-ms.com

CORNEL CREMERIUC

+ 40 745 637 898

cornel.cremeriuc@eastship-ms.com

NICU BORUZ

+ 40 745 027 759

nicu.boruz@eastship-ms.com

ALEX TESELEANU

+ 40 737 445 544

alex.teseleanu@eastship-ms.com

DAN BADOIU

+ 40 734 887 755

dan.badoiu@eastship-ms.com

